

CHISON
Value Beyond Imaging



ECO1

Premium Design, Surprising Price

CE 0197



WWW.CHISON.COM



Ultra - Light



Built-in battery (optional)
2 hours for outdoor use



12 inch rotatable LED monitor (0~30°)
adapt to different viewing angles



One- key quick save



DICOM 3.0 (optional), USB

ECO1

Premium Design, Surprising Price



Ultra-compact

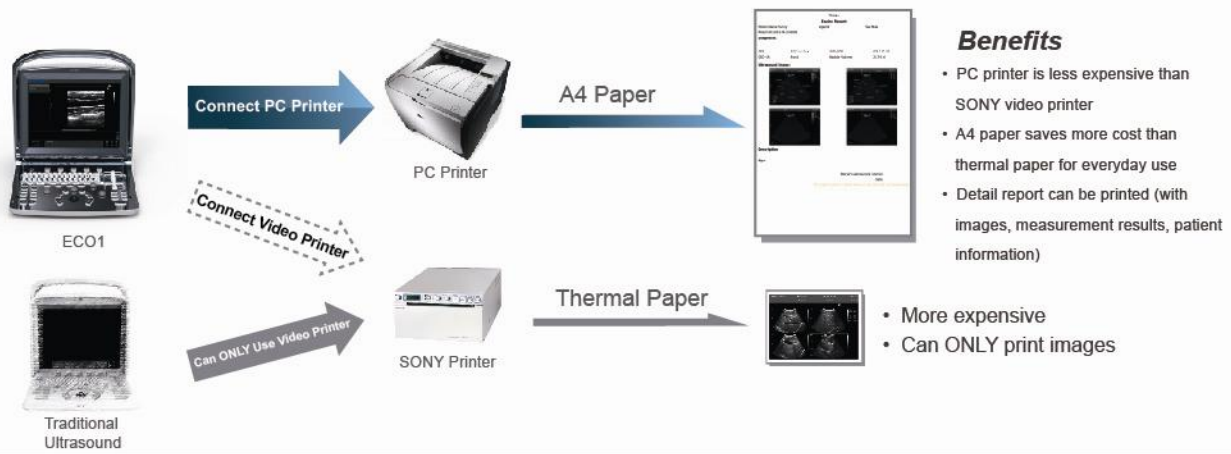


Clips for quick recall
(CINE, Still images)



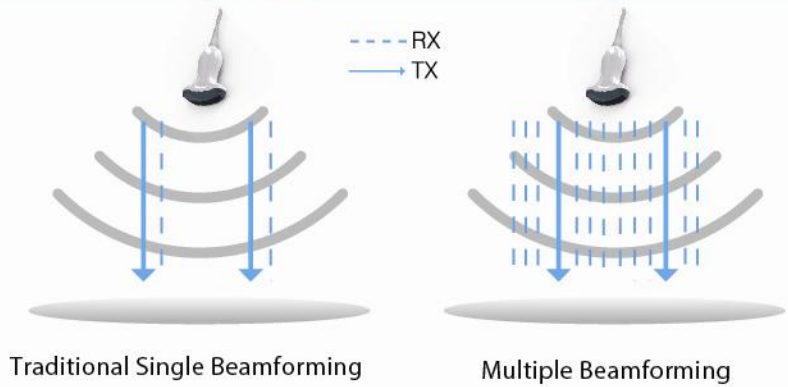
Carry bag (optional):
go anywhere you want

Support PC Printer



Multiple Beamforming Technology

- Enhance Frame Rate
- Improve Image Resolution



Excellent Image



Elbow Joint



FL



BPD



Fetal Hand



Uterus



Kidney

Specifications

Applications	Abdomen, Obsterics, Gynecology, Urology, Vascular, Small Parts , Pediatrics, Cardiology.
Display Modes	B, B/B, 4B, M, B/M
Gray Scale	256 Levels
Scanning Depth	240mm Max (depend on the probe types)
Probe Frequency	2.5MHz - 11MHz (Depend on the probe types)
Cine Loop	256 frames
Zoom	4 steps
Software Packages	General measurement, OB, Obstetrics, GYN, Urology, Abdomen, Cardiac B/M mode, Vascular, Small Part, Orthopedic, Pediatrics.
Archives Management	Patient information management, Patient images record, Patient exam report.
Documentation	Full screen documentation, Hospital name, Patient name, Date/time
	Annotation database available, Pre-saved phrases can be recalled
Power Supply	AC 240V-100V, 50Hz- 60Hz
Standard Configuration	Main unit + C3-A Convex (3.5MHz) probe +1probe connector+ 3 USB ports +VGA port + Video port + LAN port
Optional	2 probe connectors, Built-in Battery , DICOM 3.0, Anti-water keyboard cover, Carry bag (BG-100) , Support PC Printer* (HP P2055D) , TR-8000



3.5MHz Convex
C3-A



5.3-10.0MHz Linear
L7M-A



5.3-11.0MHz Linear
L7S-A



3.0 MHz Micro-Convex
MC3-A



6.0 MHz Transvaginal
V6-A



6.0 MHz Micro-Convex
MC6-A



5.0 MHz Micro-Convex
MCSV-A

CHISON MEDICAL IMAGING CO., LTD.

Factory Address:

NO.8, Xiang Nan Road, Shuo Fang, New District, Wuxi, Jiang Su Province, CHINA 214142

Sales & Service Contact Address:

No. 9 Xin Hui Huan Road, New District, Wuxi, Jiang Su Province, China214028

TEL: 0086-510-85310593 / 85310937 FAX: 0086-510-85310726 EMAIL: export@chison.com.cn



We reserve the right to make changes to this catalogue without prior notice.
Please contact us or your local dealer for the latest information.

*Please refer to the user manual for details.

E-ECO1-130606